

10W 06X12 IP67 24V NEON FLEX

TECHNICAL

Watts Per Metre	10w
Input Voltage	24v DC
Colour Temp	3000/4000K
Beam Angle	120°
IP Rating	IP67
Size	6mm (W) x 12mm (H) (not including end cap)
Bending Radius	200mm
CRI	>90(led chips)
Lamp Expectancy	>50,000hrss
Wiring	Parallel
Dimmable	Yes
LED Chip Type	2216
Max Run (2 power feed)	10m
Roll Length	10m
Cutting Increments	50mm
Mounting	Aluminium Profile clips/Channle
Operating Temperature	0 - + 60° Celcius
Ambient Temperature	-20° - + 50° Celcius
Warranty	3 Years Replacement



COMPATIBLE CONTROLLERS



SMART 5 IN 1 CONTROLLER



LED CONTROLLER



REMOTE CONTROLLER



PIR SENSOR STAIR LIGHT CONTROLLER

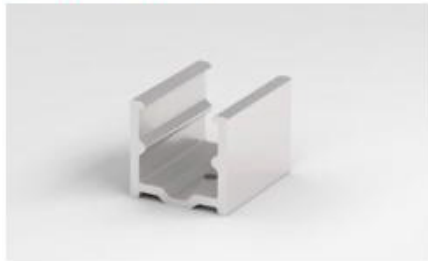
COMPATIBLE CONTROLLERS

Image	Part Number	Colour Temp	Lumens	Description
	TLI-NL0612V24-3000k	3000k	299lm	Side Bend
	TLI-NL0612V24-4000k	4000k	360lm	Side Bend

Image	Part Number	Description
	TLI-NL0612V24-CLIPS	N/A
	TLI-NL0612V24-CHANNEL	2 meters

10W 06X12 IP67 24V Neon Flex

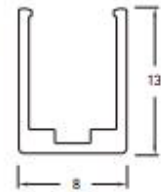
Aluminum Mounting clip



Aluminium Profile



Aluminium Profile



Dimension:
1000x8x13mm(L x W x H)

Dimension

